

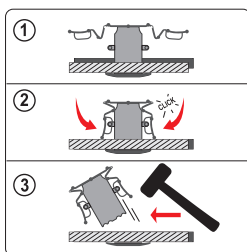
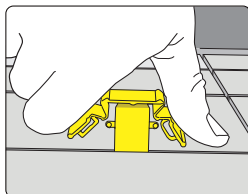
## Tile leveling clips

04677

*Innovative, single-element clip system allows to lay floor and wall tiles in an ideal, fast and easy manner.*

- clips performed from high-end plastic
- designed for tile thickness of 6-9 mm, laid with min. 1.5 mm grouting
- stabilize tile position and prevent them from moving
- allow to achieve even surface without frequently repeated leveling
- shorten labor time and increase efficiency
- do not require use of additional tools
- easy effortless assembly at each level of skills
- recommended for both professionals and handypersons

100 PCS	min.	max.
	1.5 mm	6-9 mm



*Number of clips per m<sup>2</sup> depends on tile dimensions:*

30x30	33x33	40x40	45x45	50x50	60x60	80x80	60x30	100x50	120x60
42	36	20	28	24	10	10	22	16	10