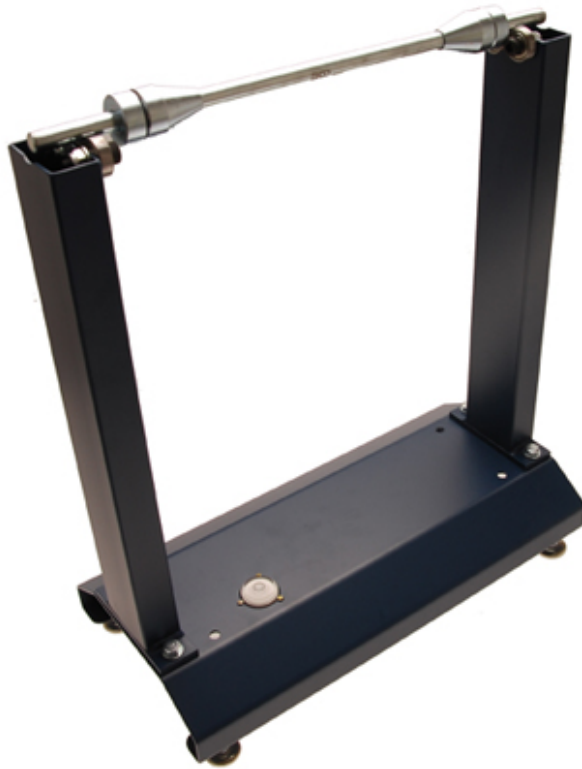


Motorcycle Wheel Balancer (Art. 8459)

PRO +



- an economic alternative to an expensive balancing machine
- allows static balancing of motorcycle tires up to 740 mm diameter and 320 mm width
- painted steel frame with a carbon steel made balancing shaft
- includes 2 centering cones for centering the wheel on the balancing shaft
- precision ball bearings provide a low-friction pendulum motion for precise balancing of the wheel

Technical modifications reserved - we are not responsible for issues while printing